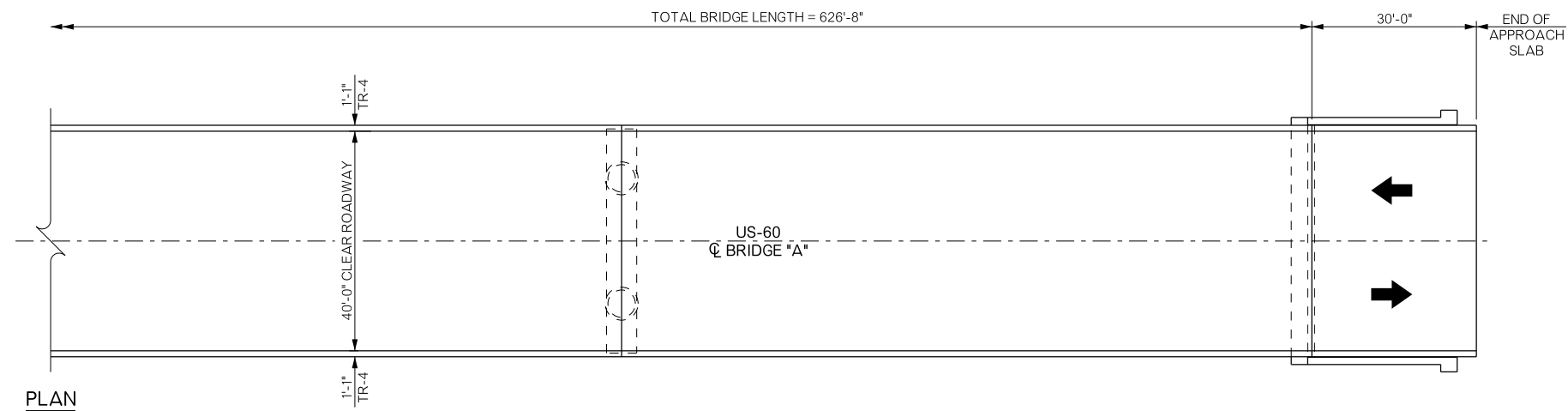
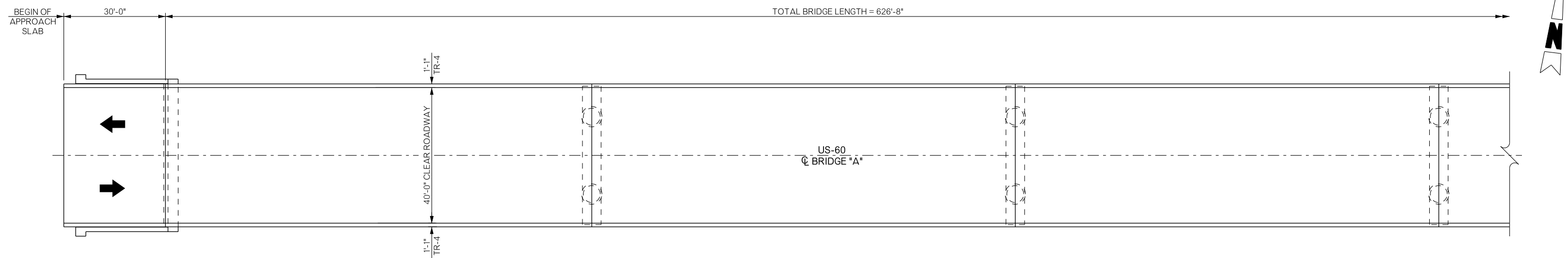
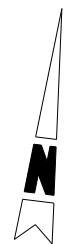
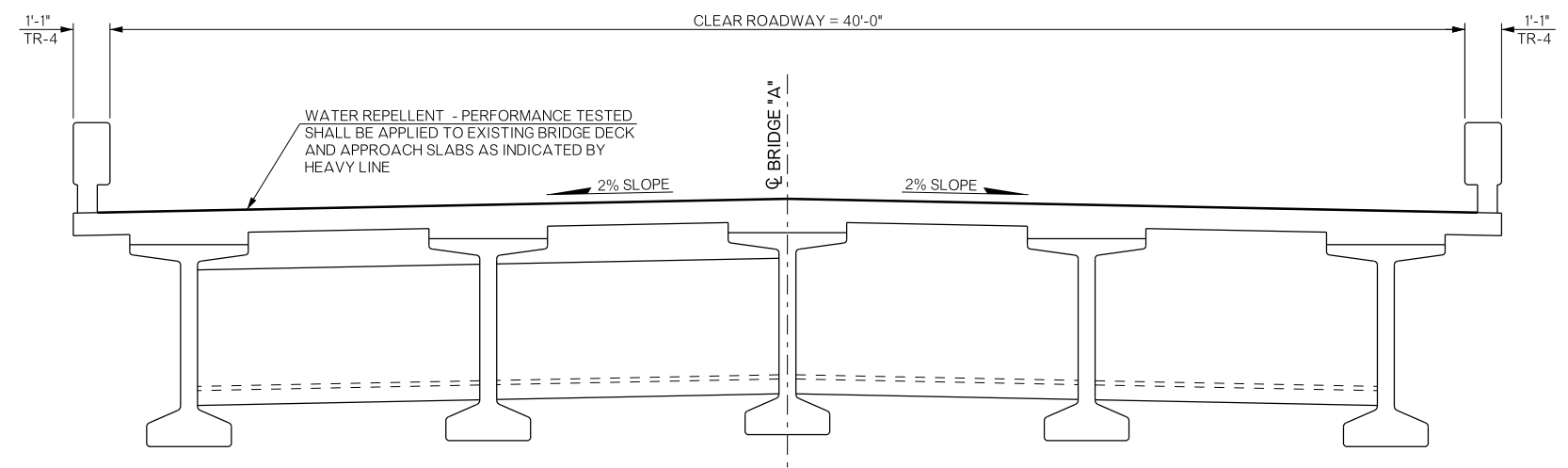


REVISIONS		
REV. NO.	DESCRIPTION	DATE



PLAN



HALF SECTION AT INTERMEDIATE DIAPHRAGM

HALF SECTION AT END DIAPHRAGM

TYPICAL CROSS SECTION

QUANTITIES				
BRIDGE 'A' - NBI 29874		US-60 OVER DRY HOLLOW CREEK		
DESCRIPTION	UNIT	QUANTITY		
WATER REPELLENT (PERFORMANCE TESTED)	S.Y.	3,110.00		
BRIDGE "A" US 60 OVER DRY HOLLOW CREEK		OSAGE COUNTY	Design	N/A
			Detail	KMS 4/16
			Check	KMS 5/16
			Squad	MAYFIELD
			Engr:	ELYAZGI
STATE OF OKLAHOMA		DEPARTMENT OF TRANSPORTATION		
JOB/PIECE NO. 31943(04)		SHEET NO. B001		